

NTI

Non-Traditional Instruction

Band

Days 1-10

****Work will be modified according to each student's IEP or 504 plan**

MHS NTI BAND Instruction Sheet

All BAND students, GRADES 9-12, will complete an NTI packet per NTI day.

Day 1: Bronze Scale Guide, Bronze Rhythm Guide, Bronze Rhythm Chunks (1-4)
Day 2: Bronze Scale Guide, Bronze Rhythm Guide, Bronze Rhythm Chunks (5-8)
Day 3: Bronze Scale Guide, Bronze Rhythm Guide, Bronze Rhythm Chunks (9-12)
Day 4: Silver Scale Guide, Silver Rhythm Guide, Silver Rhythm Chunks (13-16)
Day 5: Silver Scale Guide, Silver Rhythm Guide, Silver Rhythm Chunks (17-20)
Day 6: Gold Scale Guide, Gold Rhythm Guide, Gold Rhythm Chunks (21-24)
Day 7: Gold Scale Guide, Gold Rhythm Guide, Gold Rhythm Chunks (25-28)
Day 8: Gold Scale Guide, Gold Rhythm Guide, Gold Rhythm Chunks (29-32)
Day 9: Platinum Scale Guide, Platinum Rhythm Guide, Platinum Rhythm Chunks (33-36)
Day 10: Platinum Scale Guide, Platinum Rhythm Guide, Platinum Rhythm Chunks (37-40)

Read through the Articulation Guide and Terms Guide each day

BE SURE TO COMMUNICATE WITH YOUR TEACHER THROUGHOUT THE DAY VIA EMAIL
OR LMS

MHS 606.242.8820

Teacher Email

suzanne.lee@mboro.kyschools.us

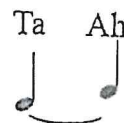
ARTICULATION GUIDE

Band - 1115. Lee

NTI 1-10

12 Nov 18
9:20 am

Slur: To slur one or more notes, tongue the first note (TA) and then do not use the tongue to re-articulate the remaining notes included in the slur (AH).



Accent: An accent mark (>) indicates that you should add emphasis to the beginning of the note with a burst of air. Once a note has been accented, the note should decay in volume, but the pitch should not change.

Tenuto: A tenuto mark (-) indicates that a note should be sustained for its full value

Staccato: A staccato mark (.) indicates that a note should be played detached or separated from the other notes.

Marcato Accent: A marcato accent (^) indicates that the note should be played short and marked

Tenuto Accent: A tenuto accent (≥) indicates that you should play an accent and hold the note for its full duration

Slur-Staccato: To play a staccato at the end of a slur, slur the notes indicated, including the staccato note, and then gently release the staccato note with your air to provide separation between the staccato note and the next note.



TERMS GUIDE

Enharmonic Equivalents: Enharmonic equivalents are notes that, even though they are written differently than other notes, are in fact the same note.

For example, B \flat is the same as A \sharp and E \flat is the same as D \sharp .

modulation → When a piece of music changes key signatures, this is called a *modulation*.

legato → *legato* is written to indicate that you should play all notes in a smooth and connected style.

BRONZE SCALE GUIDE



f (forte) = loud → play with a full rich sound (volume 8/10)

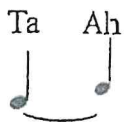
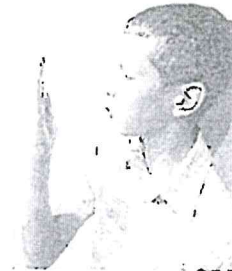


Before playing a forte dynamic on your instrument, practice using good air flow. Place your hand 8 inches in front of your mouth to monitor your air. Breathe in with an open "Oh" breath like you would say "Whoa." Over 8 counts, blow out fast and steady air on the palm of your hand. Your air should be fast enough to reach the palm of your hand and should be the same speed for all 8 counts.



mf (mezzo forte) = medium loud (volume 6/10) →

To monitor your air for mezzo forte, move your hand 6 inches from your mouth and blow slightly slower than for forte. Take in an open "Oh" breath and then practice a mezzo forte dynamic by blowing out steady air over 8 counts.



Slur: To slur one or more notes, tongue the first note (TA) and then do not use the tongue to re-articulate the remaining notes included in the slur (AH).



Accent: An accent mark (>) indicates that you should add emphasis to the beginning of the note with a burst of air. Once a note has been accented, the note should decay in volume, but the pitch should not change.



Natural Sign: Each note marked with a natural sign (♮) is used to remind you or tell you that a note is no longer flat or sharp. This note will remain natural throughout the measure or until that note is marked flat (♭) or sharp (♯) again.

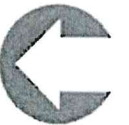


Key Signature: The key signature tells you what notes are flat (♭) or sharp (♯) the key signature can only change when an accidental, such as a natural sign (♮) is written in front of a note.

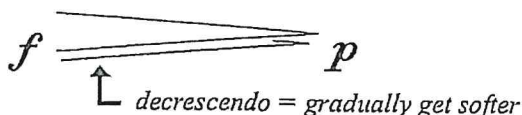
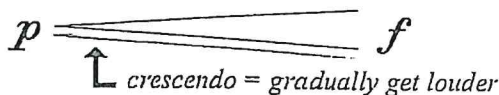
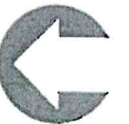


p (piano) = soft (volume 3/10)

Practice a piano dynamic by moving your hand only 3 inches from your mouth and blowing out slow, steady air over 8 counts.



Fermata: Hold the note for longer than the typical value of the note. While you hold the note, evaluate your tone quality.



BRONZE RHYTHM GUIDE ~ Day 1, 2, +3

*Follow the rhythm lesson on this page to corresponding Chunk exercise on opposite page

Time Signature: $\frac{4}{4}$ = number of beats per measure (4)
 $\frac{4}{4}$ = type of note ($\frac{1}{4}$) that gets one beat

RHYTHM KEY:

$\frac{1}{4}$ = 1 beat rest = 1 beat of silence
 $\frac{1}{2}$ = 2 beats rest = 4 beats of silence



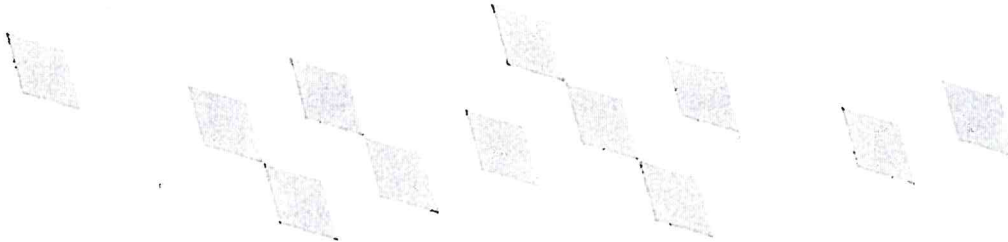
RHYTHM KEY:

rest = 2 beats of silence
 Half Rest



Tie

A tie connects two notes to each other.
 The half note gets 2 beats and the quarter note gets 1 beat, so the tie will make the two notes worth 3 beats together

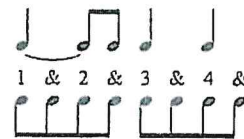
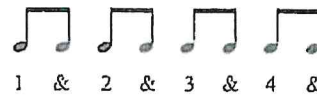


RHYTHM KEY:

$\frac{1}{8}$ = 1/2 beat
 Eighth note

$\frac{2}{8}$ = 1/2 beat each (1 total beat)
 Two Eighth notes

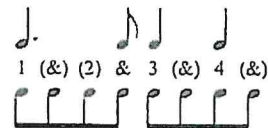
COUNT:



RHYTHM KEY:

$\frac{1}{4}$ = 1 1/2 beats
 Dotted Quarter Note

$\frac{1}{4}$ + $\frac{1}{8}$ = 2 beats
 Dotted Quarter Eighth Note



Time Signature: $\frac{3}{4}$

$\frac{3}{4}$ = number of beats per measure (3)
 $\frac{3}{4}$ = type of note ($\frac{1}{4}$) that gets one beat



Handwritten musical notation for the first staff of 'The Rose Tree'. The staff is in 4/4 time, indicated by a '4' over and under the first line. The melody begins with a quarter note on G4, followed by a quarter note on A4, a quarter rest, a quarter note on B4, a half note on C5, a half note on B4, a quarter note on A4, a quarter rest, a quarter note on G4, and a whole note on F#4.

Handwritten musical notation for the first staff of 'The Rose Tree'. The staff is in 4/4 time, indicated by a '4' over a '4' in a box. The melody consists of quarter notes and rests, with a treble clef and a key signature of one flat (B-flat).

Handwritten musical notation for the first staff of 'The Rose Tree'. The staff is in 4/4 time and contains the following notes: a quarter note on G4, a quarter note on A4, a quarter note on B4, a quarter rest, a half note on G4, a quarter note on F4, a quarter rest, a half note on E4, a quarter note on D4, and a whole note on C4.

Handwritten musical notation for the first staff of 'The Rose Tree'. The staff is in 4/4 time, indicated by a '4' over and under the first line. The melody begins with a quarter note on G4, followed by a quarter note on A4, a quarter note on B4, and a quarter note on C5. The next measure contains a quarter note on B4, a quarter note on A4, and a quarter note on G4. The final measure of the staff shows a half note on F#4 and a half note on E4.

Handwritten musical notation for the first staff of 'The Rose Tree'. The staff is in 4/4 time, indicated by a '4' over the first line and a '4' below the first line. The melody consists of quarter notes: C4, D4, E4, F4, G4, A4, B4, C5, D5, E5, F5, G5, A5, B5, C6, D6, E6, F6, G6, A6, B6, C7, D7, E7, F7, G7, A7, B7, C8, D8, E8, F8, G8, A8, B8, C9, D9, E9, F9, G9, A9, B9, C10, D10, E10, F10, G10, A10, B10, C11, D11, E11, F11, G11, A11, B11, C12, D12, E12, F12, G12, A12, B12, C13, D13, E13, F13, G13, A13, B13, C14, D14, E14, F14, G14, A14, B14, C15, D15, E15, F15, G15, A15, B15, C16, D16, E16, F16, G16, A16, B16, C17, D17, E17, F17, G17, A17, B17, C18, D18, E18, F18, G18, A18, B18, C19, D19, E19, F19, G19, A19, B19, C20, D20, E20, F20, G20, A20, B20, C21, D21, E21, F21, G21, A21, B21, C22, D22, E22, F22, G22, A22, B22, C23, D23, E23, F23, G23, A23, B23, C24, D24, E24, F24, G24, A24, B24, C25, D25, E25, F25, G25, A25, B25, C26, D26, E26, F26, G26, A26, B26, C27, D27, E27, F27, G27, A27, B27, C28, D28, E28, F28, G28, A28, B28, C29, D29, E29, F29, G29, A29, B29, C30, D30, E30, F30, G30, A30, B30, C31, D31, E31, F31, G31, A31, B31, C32, D32, E32, F32, G32, A32, B32, C33, D33, E33, F33, G33, A33, B33, C34, D34, E34, F34, G34, A34, B34, C35, D35, E35, F35, G35, A35, B35, C36, D36, E36, F36, G36, A36, B36, C37, D37, E37, F37, G37, A37, B37, C38, D38, E38, F38, G38, A38, B38, C39, D39, E39, F39, G39, A39, B39, C40, D40, E40, F40, G40, A40, B40, C41, D41, E41, F41, G41, A41, B41, C42, D42, E42, F42, G42, A42, B42, C43, D43, E43, F43, G43, A43, B43, C44, D44, E44, F44, G44, A44, B44, C45, D45, E45, F45, G45, A45, B45, C46, D46, E46, F46, G46, A46, B46, C47, D47, E47, F47, G47, A47, B47, C48, D48, E48, F48, G48, A48, B48, C49, D49, E49, F49, G49, A49, B49, C50, D50, E50, F50, G50, A50, B50, C51, D51, E51, F51, G51, A51, B51, C52, D52, E52, F52, G52, A52, B52, C53, D53, E53, F53, G53, A53, B53, C54, D54, E54, F54, G54, A54, B54, C55, D55, E55, F55, G55, A55, B55, C56, D56, E56, F56, G56, A56, B56, C57, D57, E57, F57, G57, A57, B57, C58, D58, E58, F58, G58, A58, B58, C59, D59, E59, F59, G59, A59, B59, C60, D60, E60, F60, G60, A60, B60, C61, D61, E61, F61, G61, A61, B61, C62, D62, E62, F62, G62, A62, B62, C63, D63, E63, F63, G63, A63, B63, C64, D64, E64, F64, G64, A64, B64, C65, D65, E65, F65, G65, A65, B65, C66, D66, E66, F66, G66, A66, B66, C67, D67, E67, F67, G67, A67, B67, C68, D68, E68, F68, G68, A68, B68, C69, D69, E69, F69, G69, A69, B69, C70, D70, E70, F70, G70, A70, B70, C71, D71, E71, F71, G71, A71, B71, C72, D72, E72, F72, G72, A72, B72, C73, D73, E73, F73, G73, A73, B73, C74, D74, E74, F74, G74, A74, B74, C75, D75, E75, F75, G75, A75, B75, C76, D76, E76, F76, G76, A76, B76, C77, D77, E77, F77, G77, A77, B77, C78, D78, E78, F78, G78, A78, B78, C79, D79, E79, F79, G79, A79, B79, C80, D80, E80, F80, G80, A80, B80, C81, D81, E81, F81, G81, A81, B81, C82, D82, E82, F82, G82, A82, B82, C83, D83, E83, F83, G83, A83, B83, C84, D84, E84, F84, G84, A84, B84, C85, D85, E85, F85, G85, A85, B85, C86, D86, E86, F86, G86, A86, B86, C87, D87, E87, F87, G87, A87, B87, C88, D88, E88, F88, G88, A88, B88, C89, D89, E89, F89, G89, A89, B89, C90, D90, E90, F90, G90, A90, B90, C91, D91, E91, F91, G91, A91, B91, C92, D92, E92, F92, G92, A92, B92, C93, D93, E93, F93, G93, A93, B93, C94, D94, E94, F94, G94, A94, B94, C95, D95, E95, F95, G95, A95, B95, C96, D96, E96, F96, G96, A96, B96, C97, D97, E97, F97, G97, A97, B97, C98, D98, E98, F98, G98, A98, B98, C99, D99, E99, F99, G99, A99, B99, C100, D100, E100, F100, G100, A100, B100, C101, D101, E101, F101, G101, A101, B101, C102, D102, E102, F102, G102, A102, B102, C103, D103, E103, F103, G103, A103, B103, C104, D104, E104, F104, G104, A104, B104, C105, D105, E105, F105, G105, A105, B105, C106, D106, E106, F106, G106, A106, B106, C107, D107, E107, F107, G107, A107, B107, C108, D108, E108, F108, G108, A108, B108, C109, D109, E109, F109, G109, A109, B109, C110, D110, E110, F110, G110, A110, B110, C111, D111, E111, F111, G111, A111, B111, C112, D112, E112, F112, G112, A112, B112, C113, D113, E113, F113, G113, A113, B113, C114, D114, E114, F114, G114, A114, B114, C115, D115, E115, F115, G115, A115, B115, C116, D116, E116, F116, G116, A116, B116, C117, D117, E117, F117, G117, A117, B117, C118, D118, E118, F118, G118, A118, B118, C119, D119, E119, F119, G119, A119, B119, C120, D120, E120, F120, G120, A120, B120, C121, D121, E121, F121, G121, A121, B121, C122, D122, E122, F122, G122, A122, B122, C123, D123, E123, F123, G123, A123, B123, C124, D124, E124, F124, G124, A124, B124, C125, D125, E125, F125, G125, A125, B125, C126, D126, E126, F126, G126, A126, B126, C127, D127, E127, F127, G127, A127, B127, C128, D128, E128, F128, G128, A128, B128, C129, D129, E129, F129, G129, A129, B129, C130, D130, E130, F130, G130, A130, B130, C131, D131, E131, F131, G131, A131, B131, C132, D132, E132, F132, G132, A132, B132, C133, D133, E133, F133, G133, A133, B133, C134, D134, E134, F134, G134, A134, B134, C135, D135, E135, F135, G135, A135, B135, C136, D136, E136, F136, G136, A136, B136, C137, D137, E137, F137, G137, A137, B137, C138, D138, E138, F138, G138, A138, B138, C139, D139, E1

The first staff of music is written on a five-line staff with a 4/4 time signature. The melody begins on a middle C (C4), moves down to B3, then A3, and continues with a series of eighth and sixteenth notes, ending with a double bar line.

Handwritten musical notation for the first staff of 'The Rose Tree'. The staff is in 4/4 time, indicated by a '4' over and under the first line. The melody begins with a quarter note on G4, followed by eighth notes on A4, B4, and C5. The next measure contains a quarter note on B4, an eighth note on A4, and a quarter note on G4. This is followed by a half note on F#4, then a quarter note on E4, and another half note on D4. The final measure consists of a half note on C4 and a whole note on B3. The staff ends with a double bar line.

The first staff of music is in 4/4 time. It begins with a treble clef and a key signature of one flat (B-flat). The melody consists of the following notes: a quarter note B-flat, an eighth note A, an eighth note G, a quarter note F, an eighth note E, an eighth note D, a quarter note C, an eighth note B-flat, an eighth note A, a quarter note G, an eighth note F, an eighth note E, a quarter note D, an eighth note C, an eighth note B-flat, a quarter note A, an eighth note G, an eighth note F, a quarter note E, an eighth note D, an eighth note C, a quarter note B-flat, and a final quarter note A.

Handwritten musical notation for the first staff of 'The Rose Tree'. The staff is in 4/4 time, indicated by a '4' over a '4' in a box at the beginning. The melody starts with a half note G4, followed by a quarter note A4, a quarter note B4, a quarter note C5, a quarter note B4, a quarter note A4, a quarter note G4, a quarter note F#4, a quarter note E4, a quarter note D4, a quarter note C4, and a quarter note B3. The staff ends with a double bar line.


SILVER RHYTHM GUIDE



Day 4 7
5





*Follow the rhythm lesson on this page to corresponding Chunk exercise on opposite page

RHYTHM REVIEW:

RHYTHM KEY:


 = 1 1/2 beats
Dotted Quarter Note

 +  = 2 beats
Dotted Quarter Eighth Note

  =  
1 & 2 & 1 & 2 &

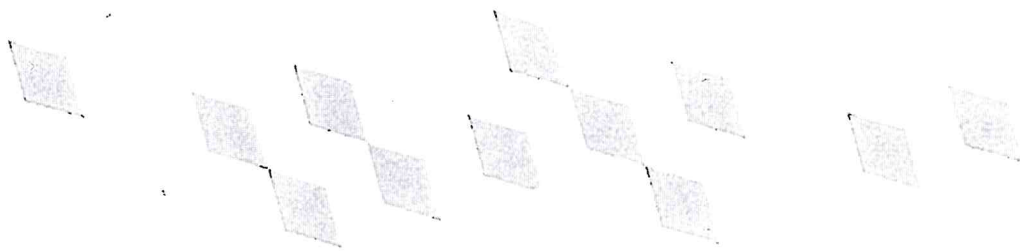


RHYTHM KEY:


 = 1/2 beat of silence
Eighth Rest


COUNT:


count: 1 & 2 & (3) & 4 &



RHYTHM KEY:

 = 1/4 beat each
Sixteenth Notes


1 e & a

Before doing this Chunk, practice counting sixteenth notes:


1 e & a 2 e & a 3 e & a 4 e & a



Sixteenth Note Subdivisions:

Sixteenth notes can be grouped with eighth notes to form different subdivisions of the beat. Use the guide to the right to determine how to count these two sixteenth note subdivisions.


1 e & a

OR


1 e & a



More Sixteenth Note Subdivisions:

Sixteenth notes can also be grouped with dotted eighth notes to form different subdivisions of the beat. Before practicing this Chunks, determine whether the sixteenth note is on the beginning or the end of the beat.


1 e & a

OR


1 e & a



Remember to subdivide in $\frac{3}{4}$ time (1 & 2 & 3 &, 1 & 2 & 3 &, etc.)



BAN

SILVER RHYTHM CHUNKS

Chunk #11



Chunk #12



Chunk #13



Chunk #14



Chunk #15



Chunk #16



Chunk #17



Chunk #18



Chunk #19



Chunk #20



GOLD RHYTHM GUIDE

Day 6, 7 & 8

*Follow the rhythm lesson on this page to corresponding Chunk exercise on opposite page

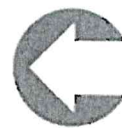
In the first two measures, remember to subdivide in $\frac{2}{4}$ time.

Cut Time: (C):

In Cut Time, all note values are cut in half from what they were in the first two measures. A half note gets one beat in this time signature.

COUNT:

count: 1 & 2 &

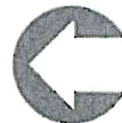


Time Signature: $\frac{6}{8}$

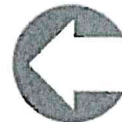
6/8 RHYTHM KEY: $\text{eighth note} = 1 \text{ beat}$ $\text{quarter note} = 2 \text{ beats}$ $\text{dotted quarter note} = 3 \text{ beats}$

COUNT:

count: 1 2 3 4 5 6

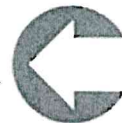


6/8 RHYTHM KEY: $\text{eighth rest} = 1 \text{ beat of silence}$ $\text{dotted half note} = 6 \text{ beats}$



Time Signature: $\frac{9}{8}$

Just as in Chunks 23 & 24, in $\frac{9}{8}$ the eighth note will get the beat, but now there are 9 beats in each measure.



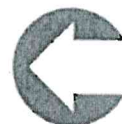
Quarter Note Triplets: Quarter note triplets can be counted by saying Drag- tri - plet (as shown) or by using another method that your director may prefer. Three quarter note triplet notes fit into the time of two beats.

count: 1 2 3 4 5 6
Drag- tri- plet Drag- tri- plet



Time Signature: $\frac{5}{4}$

There are 5 beats in each measure in this time signature. When subdividing, remember to count 5 beats. Also remember that 3 quarter note triplets take up 2 beats.



Eighth Note Triplets: Subdivide eighth note triplets by saying Tri - pa - let (as shown).

count: 1 2 3 4 5 6
Tri- pa- let Tri- pa- let

count: 1 & a 2 & a 1 & a 2 & a
Counting $\frac{6}{8}$ in 2: Another way to count in $\frac{6}{8}$ is to subdivide into 2 main beats. Practice counting as shown above.



COUNT:

count: 1 & u 2 &

Duplet: To count a duplet, temporarily change your subdivision from $\frac{6}{8}$ to $\frac{2}{4}$



Time Signature: $\frac{6}{4}$

Subdivide 6 beats in each measure when in this time signature.



BAND

GOLD RHYTHM CHUNKS

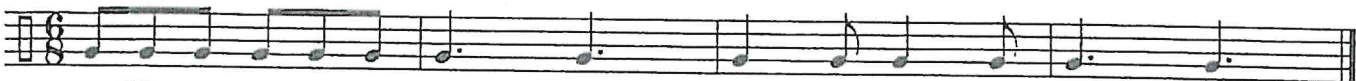
Chunk #21



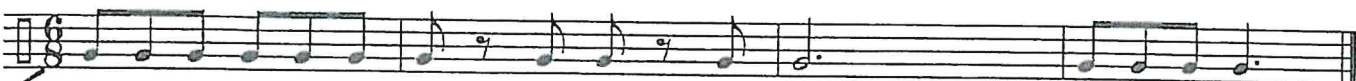
Chunk #22



Chunk #23



Chunk #24



Chunk #25



Chunk #26



Chunk #27



Chunk #28



Chunk #29



Chunk #30



PLATINUM RHYTHM GUIDE

Day 9
10

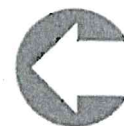
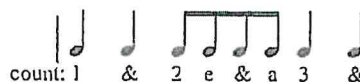
*Follow the rhythm lesson on this page to corresponding Chunk exercise on opposite page

Time
Signature:



Just as in Cut Time, in this time signature, a half note gets one beat. There are 3 beats in each measure.

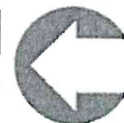
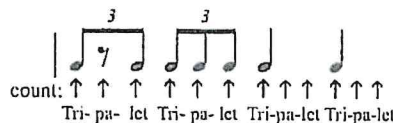
COUNT:



Review- Eighth Note Triplets:

Subdivide eighth note triplets by saying "Tri- pa- let. You may also subdivide triplets during quarter notes (as shown below) to help you maintain a consistent pulse.

COUNT:

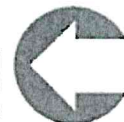


Time
Signature:

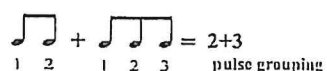
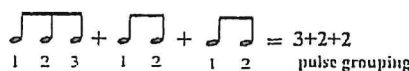
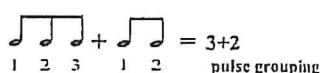


Subdivide this time signature into 4 beats as shown to the right. This will be easier than counting to 12 in each measure. Just as in $\frac{6}{8}$ and $\frac{9}{8}$, the eighth note gets the beat in this time signature.

COUNT:

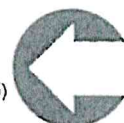
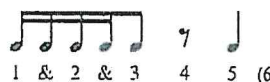


Pulse Groupings: In Chunks 35 & 36, you will count either 1 2 or 1 2 3, depending on how many eighth notes are grouped together into one pulse grouping. Before counting this Chunk, evaluate what the pulse groupings will be, based on the guide to the right. To help feel the pulse groupings better, accent the first note of each pulse grouping as shown.



Sixteenth Notes in $\frac{6}{8}$: In this time signature, sixteenth notes will get 1/2 beat each. See the guide to the right to see how to count a combination of eighth notes, eighth rests and sixteenth notes.

COUNT:



RHYTHM KEY:



= 1/2 beat of silence in $\frac{6}{8}$
Sixteenth Rest

COUNT:



RHYTHM KEY:

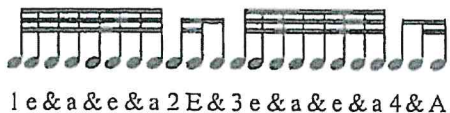


= 1/8 beat each or 8 per beat
Thirty-Second Notes

Sextuplet:

As with eighth note triplets, subdivide a sextuplet by saying "Tri- pa- let" (as shown below). A sextuplet fits six sixteenth notes into one beat.

COUNT:



COUNT:

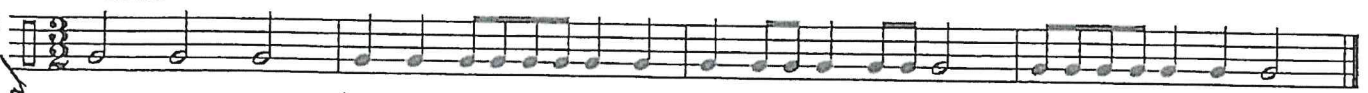


BAN

PLATINUM RHYTHM CHUNKS

Day 8
continued

Chunk #31



Chunk #32



Chunk #33



Chunk #34



Chunk #35

follow pulse groupings as notated (i.e. 2+3+2 or 3+2+2)



Chunk #36

follow pulse groupings as notated (ie. 2+3 or 3+2)



Chunk #37



Chunk #38



Chunk #39



Chunk #40

